



bioenergy2020+

# Reflexions on the existing guideline (and EN) about the sampling and analysis of tar matter from product gas, pyrolysis gas and synthesis gas

DI Johannes Zeisler  
[johannes.zeisler@bioenergy2020.eu](mailto:johannes.zeisler@bioenergy2020.eu)

Milan, 21.06.2012



innovations   
kompetenz



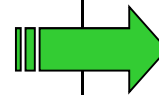
# Application of CEN/TS 15439

## Sampling-conditions at measurement point:

pressure	[kPa]	60 - 6 000
temperature	[°C]	0 - 900
tar loading	[mg/m <sup>3</sup> <sub>n</sub> ]	1 – 300 000
dust loading	[mg/m <sup>3</sup> <sub>n</sub> ]	20 – 30 000

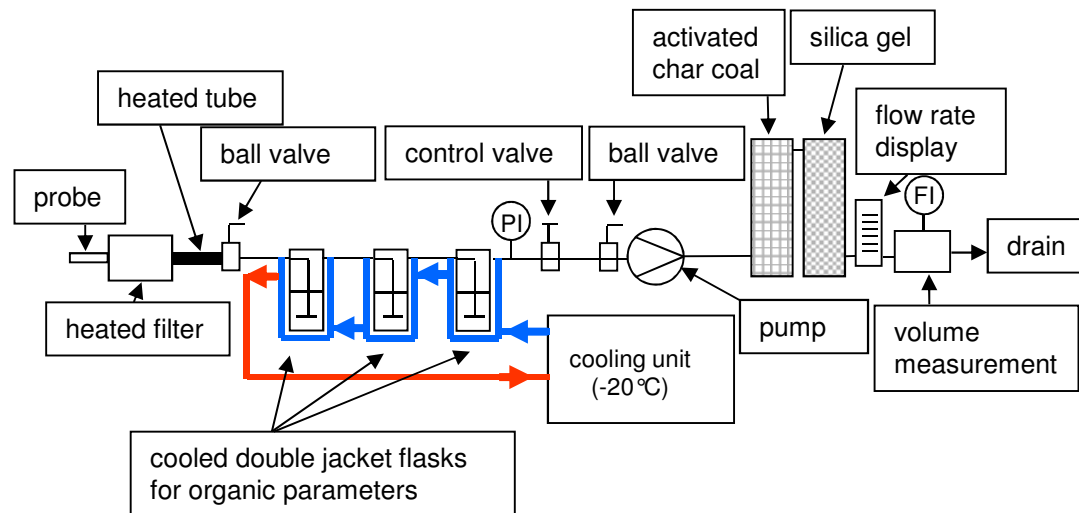
## Received values:

gravimetric tar	[mg/m <sup>3</sup> <sub>n</sub> ]
concentration of individual org. compounds	[mg/m <sup>3</sup> <sub>n</sub> ]
sum of GC-detactable tar calculates as naphthalene	[mg/m <sup>3</sup> <sub>n</sub> ]
dust concentration	[mg/m <sup>3</sup> <sub>n</sub> ]



**Instructions for:** reagents, equipment, preparation, sampling, storage, analysis, calculations, dimensions

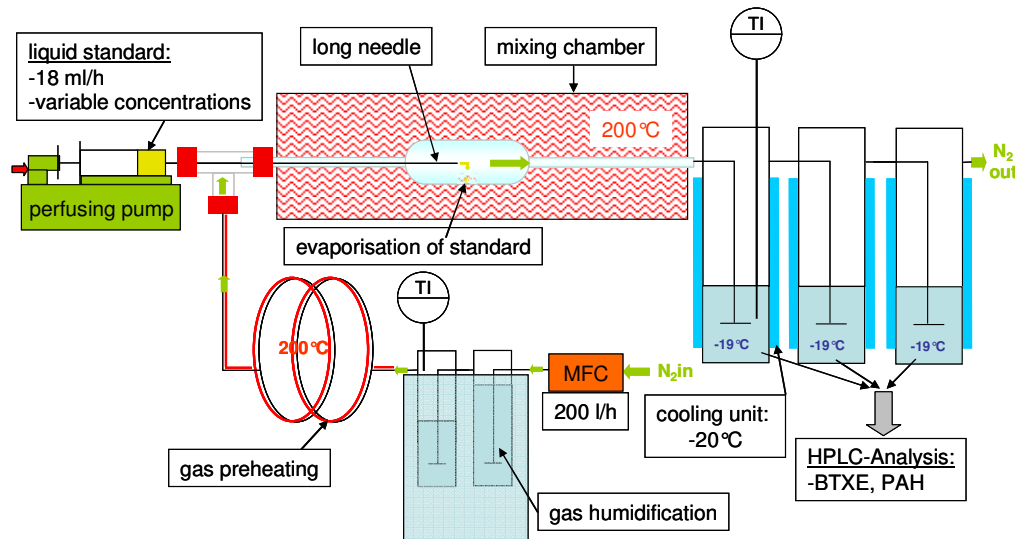
# Equipment at Bioenergy2020+



- **probe:** stainless steel, PTFE, glass
- **heated filters:** planar or depth
- **absorption columns:** cooled (-20 °C)
- **pump:** membrane pump
- **gas drying/cleaning:** silica, activated carbon
- **volume detection:** diaphragm gas-meter



# Quality measures – multi component gas-generating unit



- gas flow: 50-500 l/h
- gas humidification: 20-90°C (saturation)
- gas preheating: 120°C
- dosage of liquid standard: 0.1 to 50 ml/h
- vaporisation temperature: 200°C
- absorption units: cooled down to max. -19°C; 100 ml 2-propanol each



- tested substances: BTX(o,m,p)E-S, PAH (naphthalene to crysene), aldehydes, terpenes
- tested absorbance solutions: 2-propanol, acetonitrile (+addition)
- result:

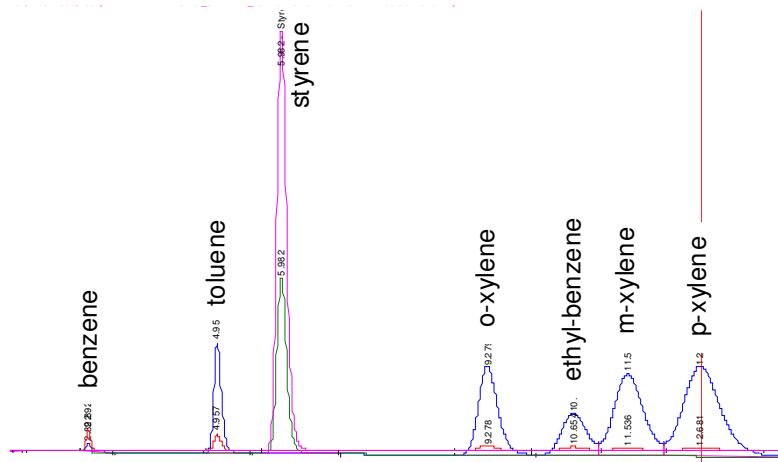
$$y[\%] = \frac{m_{abs}}{m_{input}} * 100$$



# HPLC-analysis

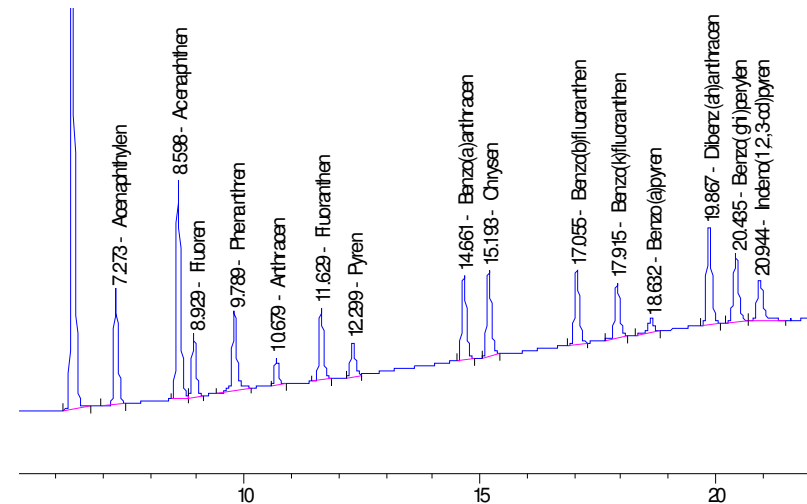
## BTXE-S:

- Column: Zorbax Eclipse PAH, 4.6x150 mm; 3.5 µm; plus precolumn
- Injection: 10µl, Flow: 2ml/min
- Detection: MWD: 220nm; 254nm (benzene, styrene)
- Solvent: 0-1min 45% acetonitrile, 55% water; 1-15min gradient to 25% acetonitrile, 75% water



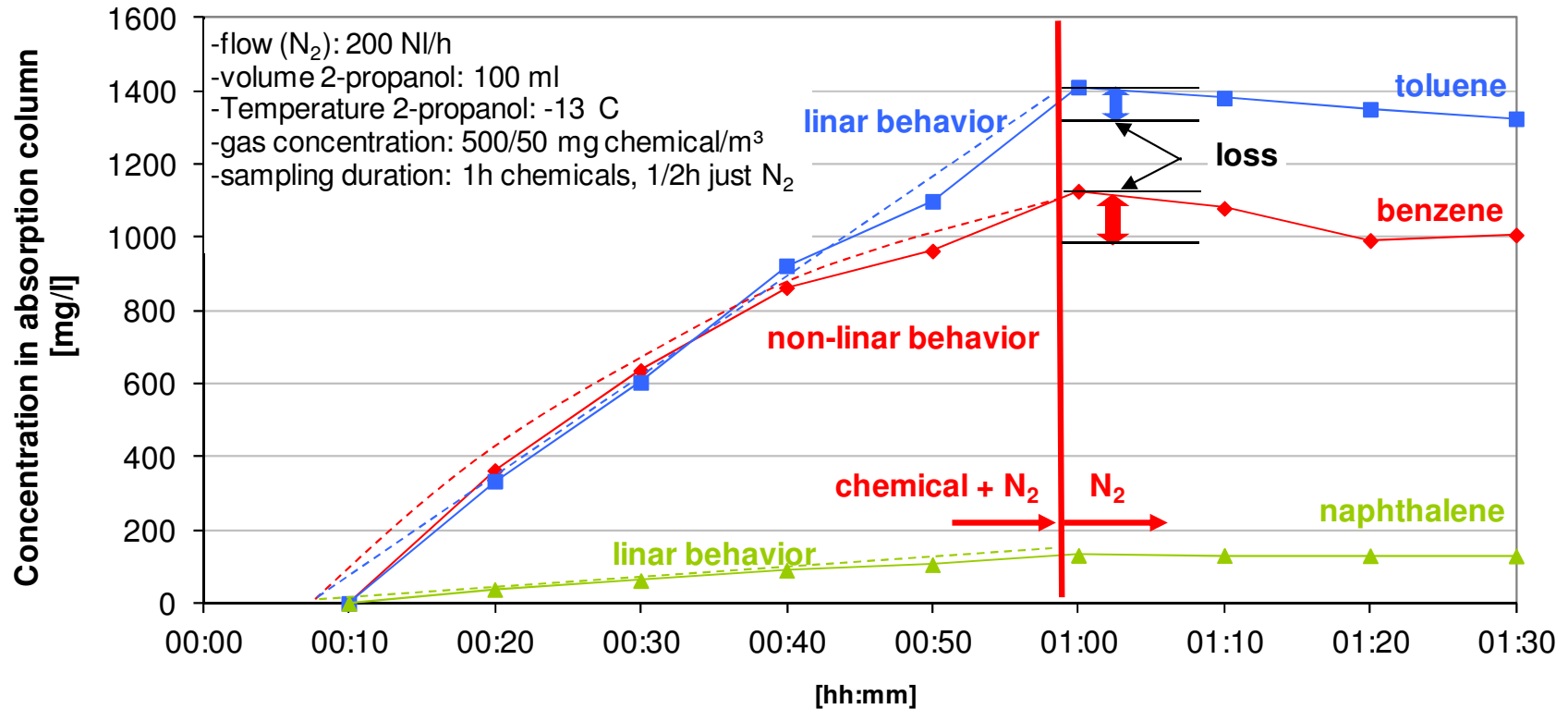
## PAH:

- Column: Zorbax Eclipse PAH, 4.6x150 mm; 3.5 µm; plus precolumn
- Injection: 10µl, Flow: 2ml/min
- Detection: MWD: 220nm
- Solvent: 0-0.66min 40% acetonitrile, 60% water; 0.66-20min gradient to 100% acetonitrile, 20-25min 100% acetonitrile; 25-27min gradient to 40% acetonitrile 60% water; 27-30min 40% acetonitrile, 60% water





# Dynamic behaviour of benzene, toluene and naphthalene in 2-propanol



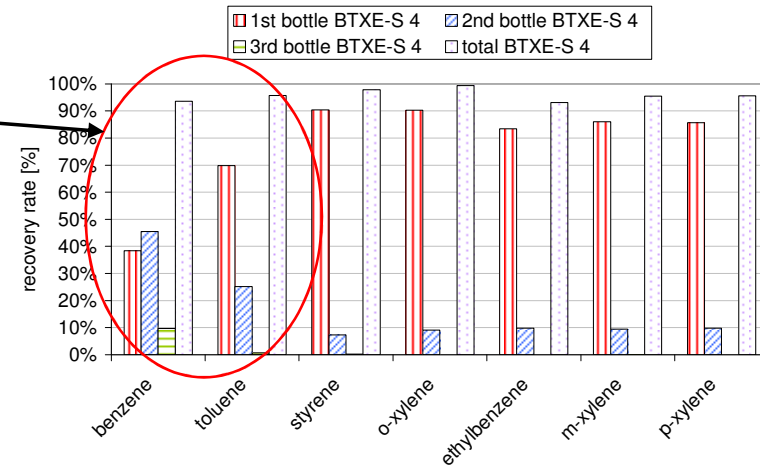
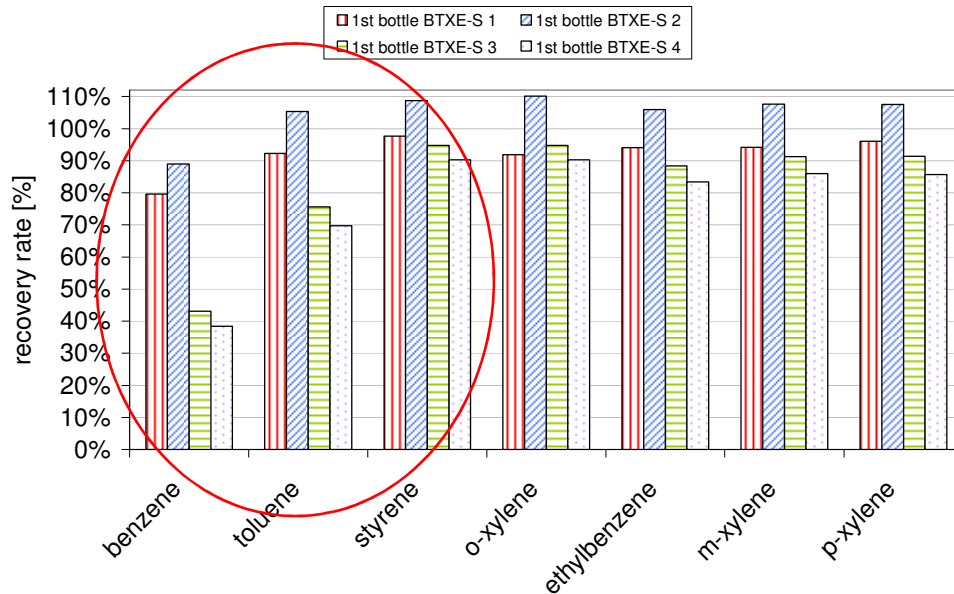




# Results – BTXE-S-tests (4 runs)

## Settings:

	BTXE-S 1	BTXE-S 2	BTXE-S 3	BTXE-S 4
T 1 <sup>st</sup> bottle [°C]	-15	-15	+14	+7
T 2 <sup>nd</sup> bottle [°C]	-15	-15	-15	-15
T 3 <sup>rd</sup> bottle [°C]	-15	-15	-15	-15
carrier gas flow [l/h]	200	200	200	200
water loading [kg/kg <sub>gas,dry</sub> ]	-	-	-	0,05
gas-concentration [mg/m <sup>3</sup> ]	85-110	75-97	80-103	85-108
concentration 1st bottle [mg/l]	106-148	103-146	58-151	47-128



## Findings:

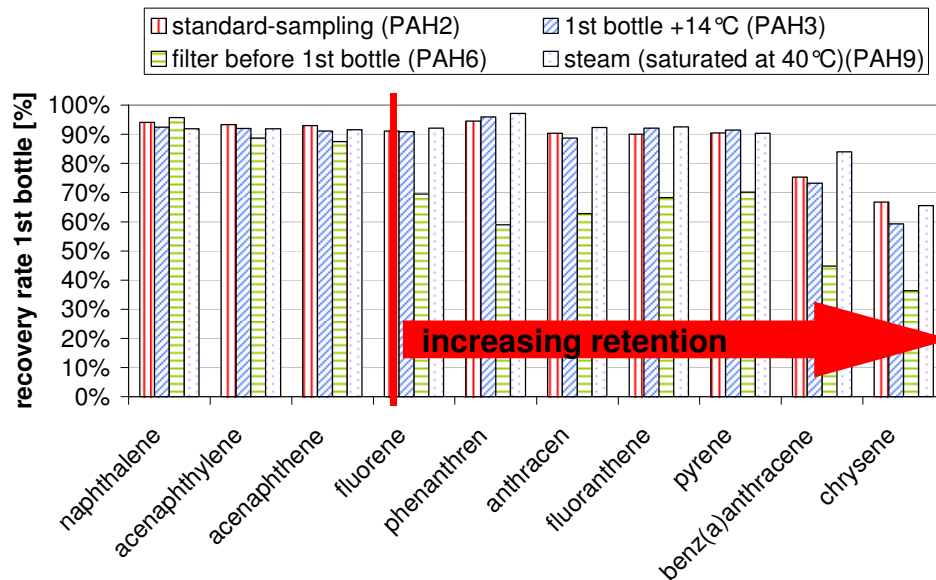
- temperature-influence (cooling):
  - Strongest influence on benzene and toluene
  - at -15°C: 80% in 1<sup>st</sup> bottle
  - at +10°C: 40% in 1<sup>st</sup> bottle
- Solvent suitability:
  - 2-propanol suitable for all BTXE-S
  - at -15°C: 2 columns sufficient



# Results – PAH-tests (9 runs)

## Settings:

	PAH 1	PAH 2	PAH 3	PAH 4	PAH 5	PAH 6	PAH 8	PAH 9
T 1 <sup>st</sup> bottle [°C]	-15	-12	+14	-12	-12	-12	+7	+7
T 2 <sup>nd</sup> bottle [°C]	-15	-12	-12	-12	-12	-12	-12	-12
T 3 <sup>rd</sup> bottle [°C]	-	-12	-12	-12	-12	-12	-12	-12
carrier gas flow [l/h]	200	200	200	200	200	200	200	200
water loading [kg/kg <sub>gas,dry</sub> ]	-	-	-	-	-	-	0,05	0,05
filtering (planar filter)	-	-	-	x	x	x	-	-
gas-concentration [mg/m <sup>3</sup> ]	3.6 - 4.6 (naphthalene 20)							
concentration 1st bottle [mg/l]	2 - 6 (naphthalene 20 - 30)							



## Findings:

- temperature-influence (cooling):
  - no difference -15/+7°C
- temperature-influence (heating):
  - for larger PAH (>fluorene) temperature 350 – 450 °C
  - Danger of condensation at T<400 °C
- solvent suitability:
  - 2-propanol suitable for all PAH
  - generally over 90% in 1<sup>st</sup> column
  - 2 columns sufficient enough





# Results – sample storage

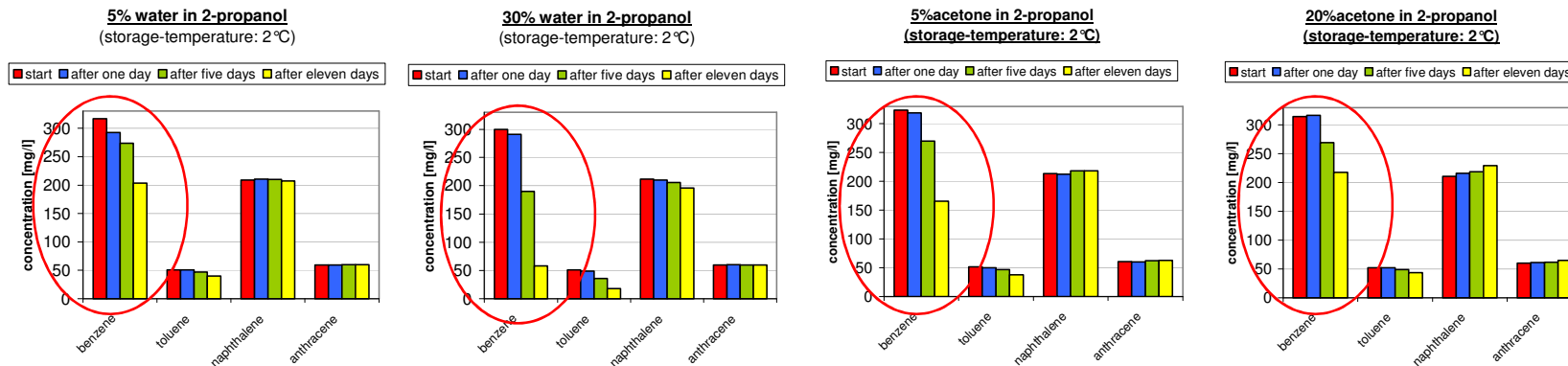
## Questions:

- How long can benzene/toluene/naphthalene/anthracene be stored before analysing?
- Has the water-content of the 2-propanol sample an influence on the storage-duration?
- Is it possible to stabilise the samples?

## Settings:

	benzene	toluene	naphthalene	anthracene
initial concentration [mg/l]	292	50	206	58
variation of water [% <sub>vol</sub> ]	5,10,20,30			
variation of acetone [% <sub>vol</sub> ]	5,10,20			

## Results:





## Summary

### ■ Sampling:

#### ■ BTXE-S:

- 100 mg/m<sup>3</sup> BTXE-S in gas → sampling conditions:
  - 3-columns in a row with 100 ml 2-propanol each
  - Gas-flow: 200 l/h
  - Cooling temperature <-13°
  - Sampling duration: 1 h

#### ■ PAH:

- 5 mg/m<sup>3</sup> PAH (naphthalene to crysene) in gas → sampling conditions:
  - 2-columns in a row with 100 ml 2-propanol each
  - Gas-flow: 200 l/h
  - Cooling temperature 0°C sufficient
  - Sampling duration: 1 h or longer
  - Heating of filter/tube: at least 350° (for largest PAH probably not sufficient)

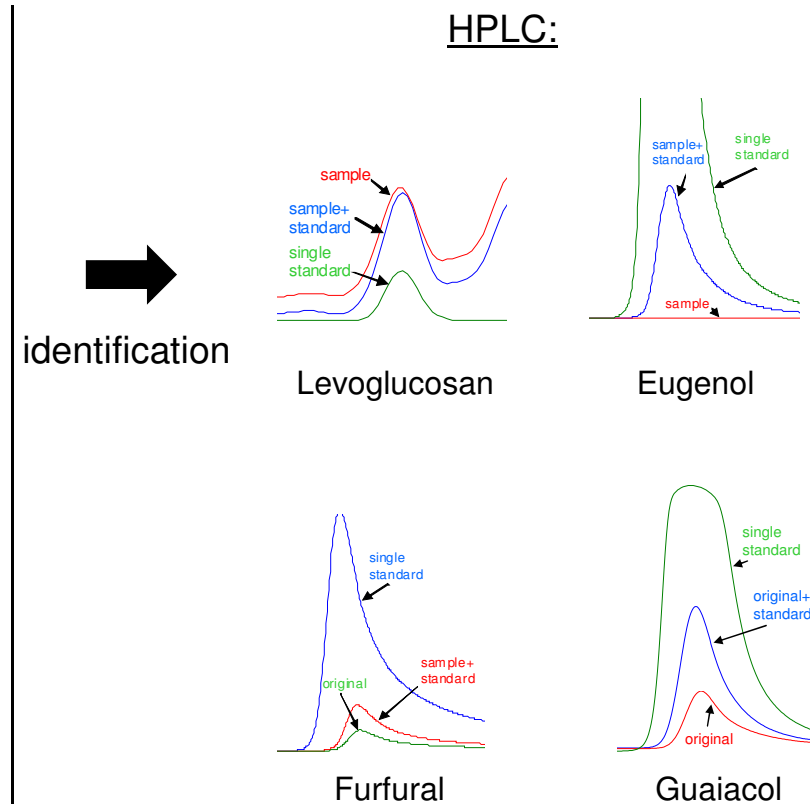
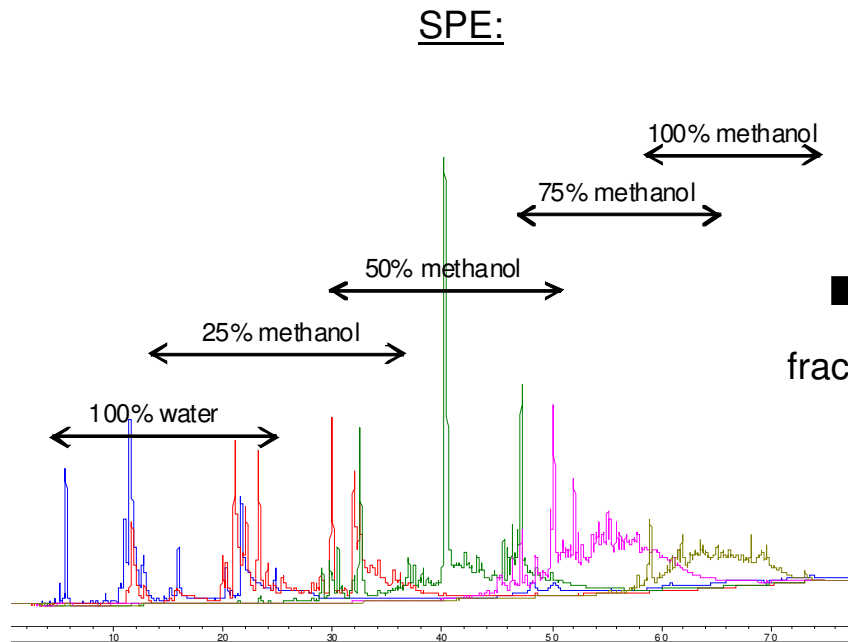
### ■ Storage/analysis:

- BTXE-S: storage-temperature: 2-8 °C (or even cooler); analysis: next day
- PAH: storage-temperature: 2-8 °C (sufficient); analysis: at least 11 days stable



# Fractionation of pyrolysis-samples for identification of main components

5 fractions:





bioenergy2020+

**Thank you for your attention!**

Further questions? Please contact:

DI Johannes Zeisler  
[johannes.zeisler@bioenergy2020.eu](mailto:johannes.zeisler@bioenergy2020.eu)

DI Markus Kleinhappl  
[markus.kleinhappl@bioenergy2020.eu](mailto:markus.kleinhappl@bioenergy2020.eu)

Milan, 21.06.2012



innovations   
kompetenz



## Thermodynamic fundamentals of accumulation

- Physical fundamentals and data of selected tars
  - Mechanisms and data
  - Pure substances
  - Gas/Liquid-systems (VLE)
- Test of a single stage accumulator
  - Mass transfer and VLE
- Further information to be useful
  - Standardised characterisation of separators
  - VLE-data for solvents/PAH (PAH-S)
  - Capture and break through curves



# Physical fundamentals

Phase change thermodynamic of **pure** substances:

**Vapour** ← → **Liquid**: condensation and evaporation

*„activity gas = activity liquid“*

$$p_i = p_{total} \cdot y_i \cdot \varphi_i|_{gas} = p_i^* \cdot x_i \cdot \gamma_i|_{liquid}$$

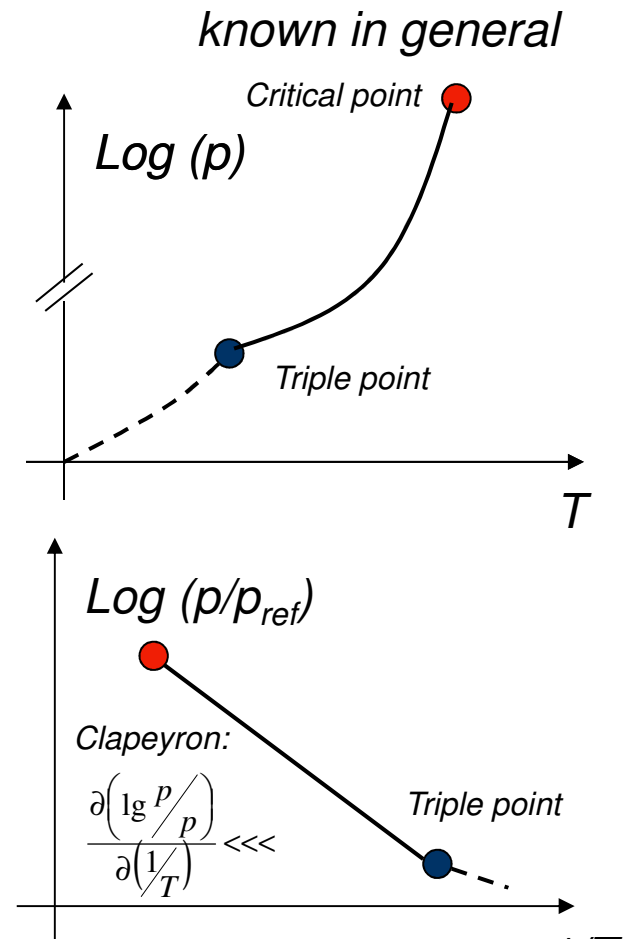
**Vapour** ← → **Solid**: re-sublimation and sublimation

*„activity gas = activity solid“*

$$p_i = p_{total} \cdot y_i \cdot \varphi_i|_{gas} = p_i^* \cdot x_i \cdot \gamma_i|_{solid\ condensed}$$

The clear and correct description of real substances is not as easy as it looks.

(several data ref.; missing data,..)



Als Mitglied des Fachverbandes vertreten bei



innovations  
kompetenz







Physical fundamentals  
data selection 'Tars', concentration mapping *S. Biollaz*



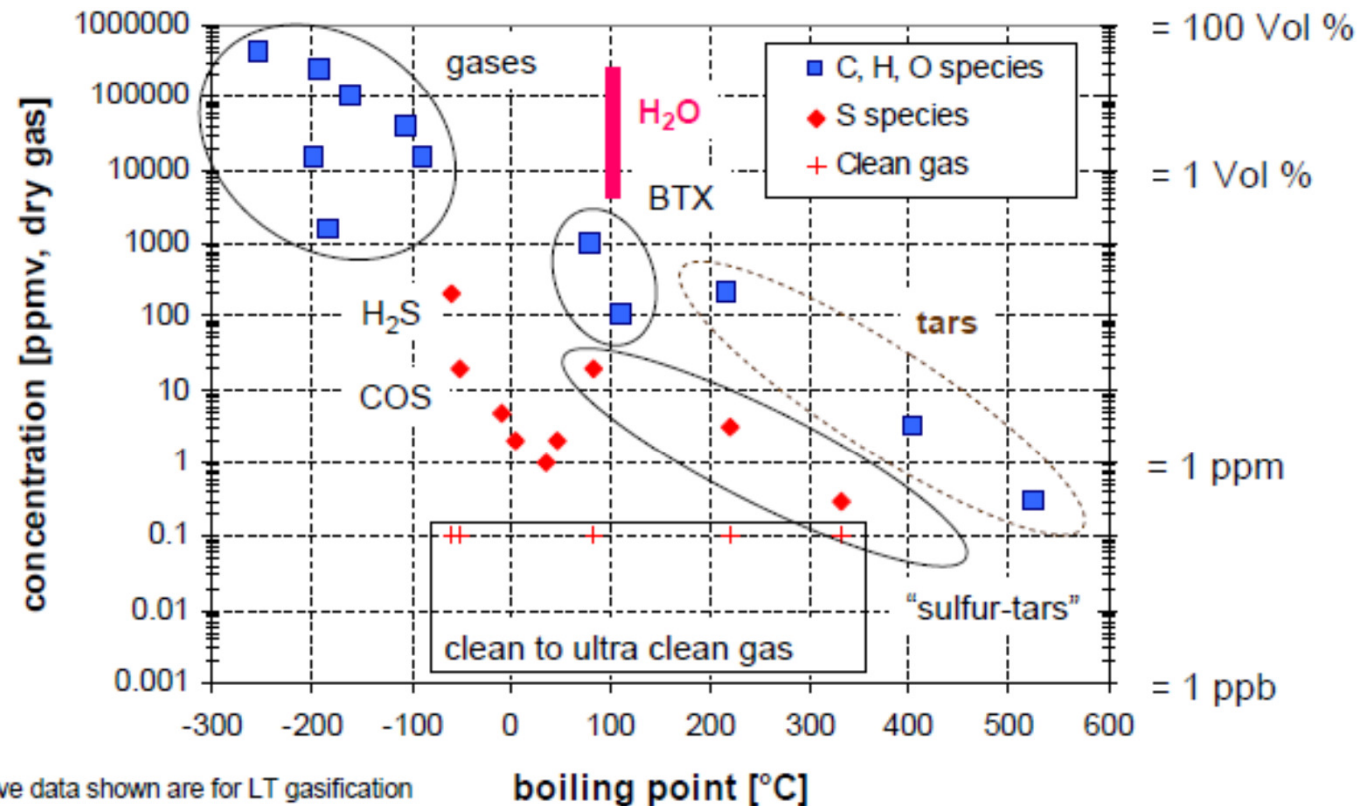
Carbon diagnostics

C-Analytical instrument

μGC

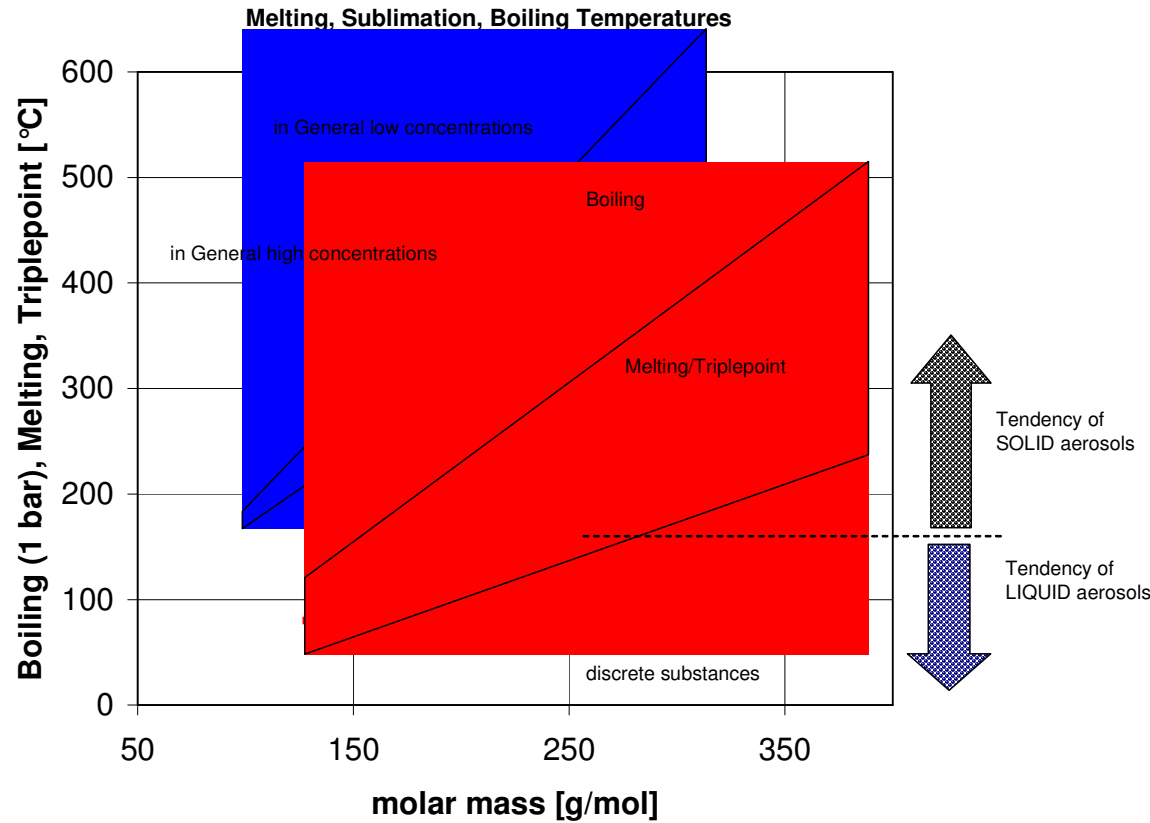
GC/MS, GC/FID

UV-VIS





# Physical fundamentals data selection 'Tars'

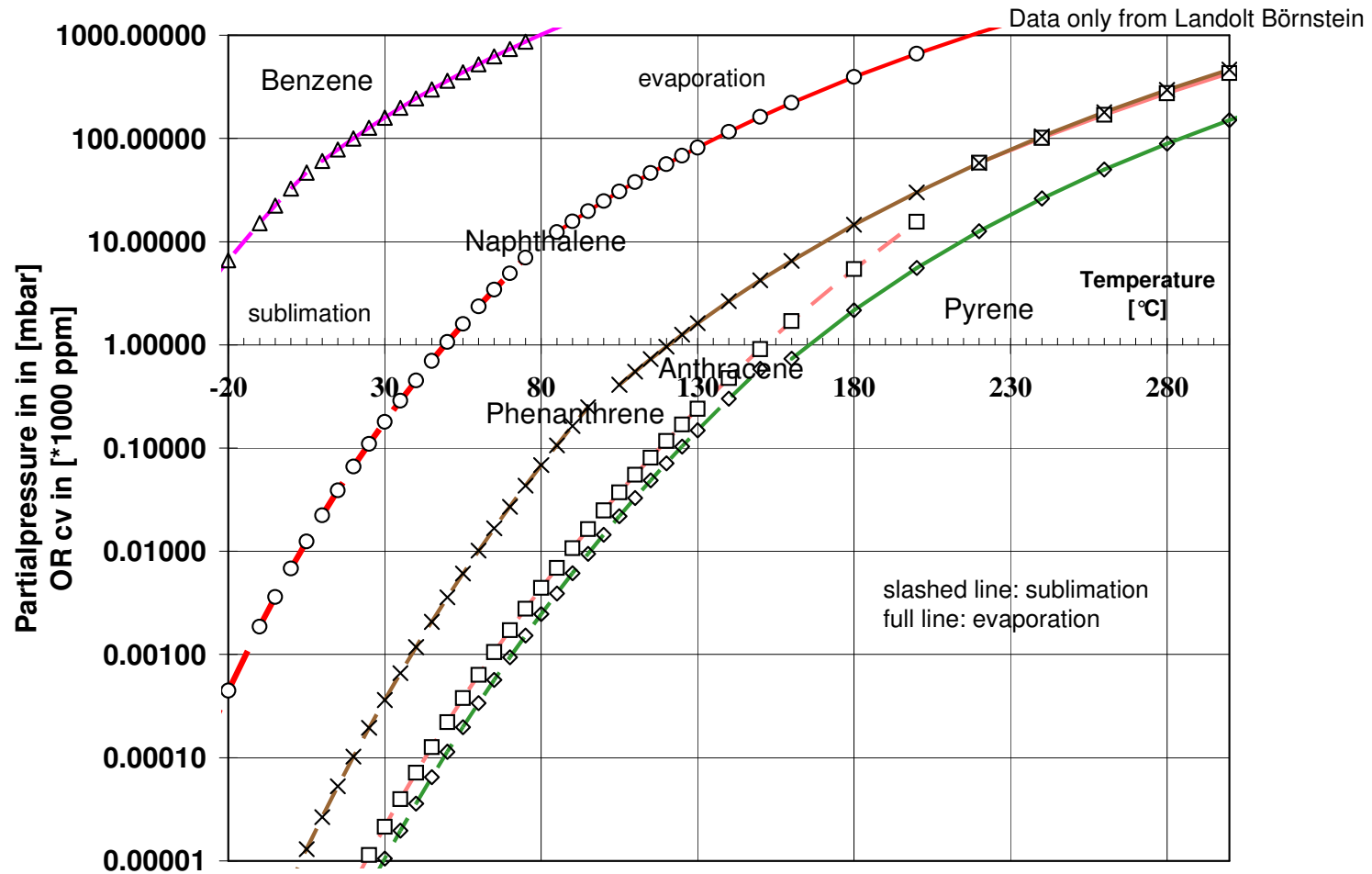


*e.g. selection of PAH*

		molar mass [g/mol]	boiling point [°C]	melting point [°C]
napthalene	C10H8	128.16	218	80
ace-napthalene	C12H8	152.2	275	93
acetyl-napthalene	C12H10	154.21	279	96
fluorene	C13H10	166.22	295	117
phenanthrene	C14H10	178.22	340	100
anthracene	C14H10	178.22	342	218
fluoranthrene	C16H10	202.26	393	110
pyrene	C16H10	202.26	404	156
a-phenylene anthracene	C18H12	228.29	435	159
chrysene	C18H12	228.29	448	256
b-phenylene-floourene	C20H12	252.32	393	168
bk-f	C20H12	252.32	480	217
ba-p	C20H12	252.32	496	177
indeno(1,2,3,c,d)-pyrene	C22H12	276.34	534	162
di-benzo (a,h) anthracene	C22H14	278.35	535	262
benzo(g,h,l)perylene	C22H12	276.34	542	273



# Physical fundamentals saturation pressures of selected tars

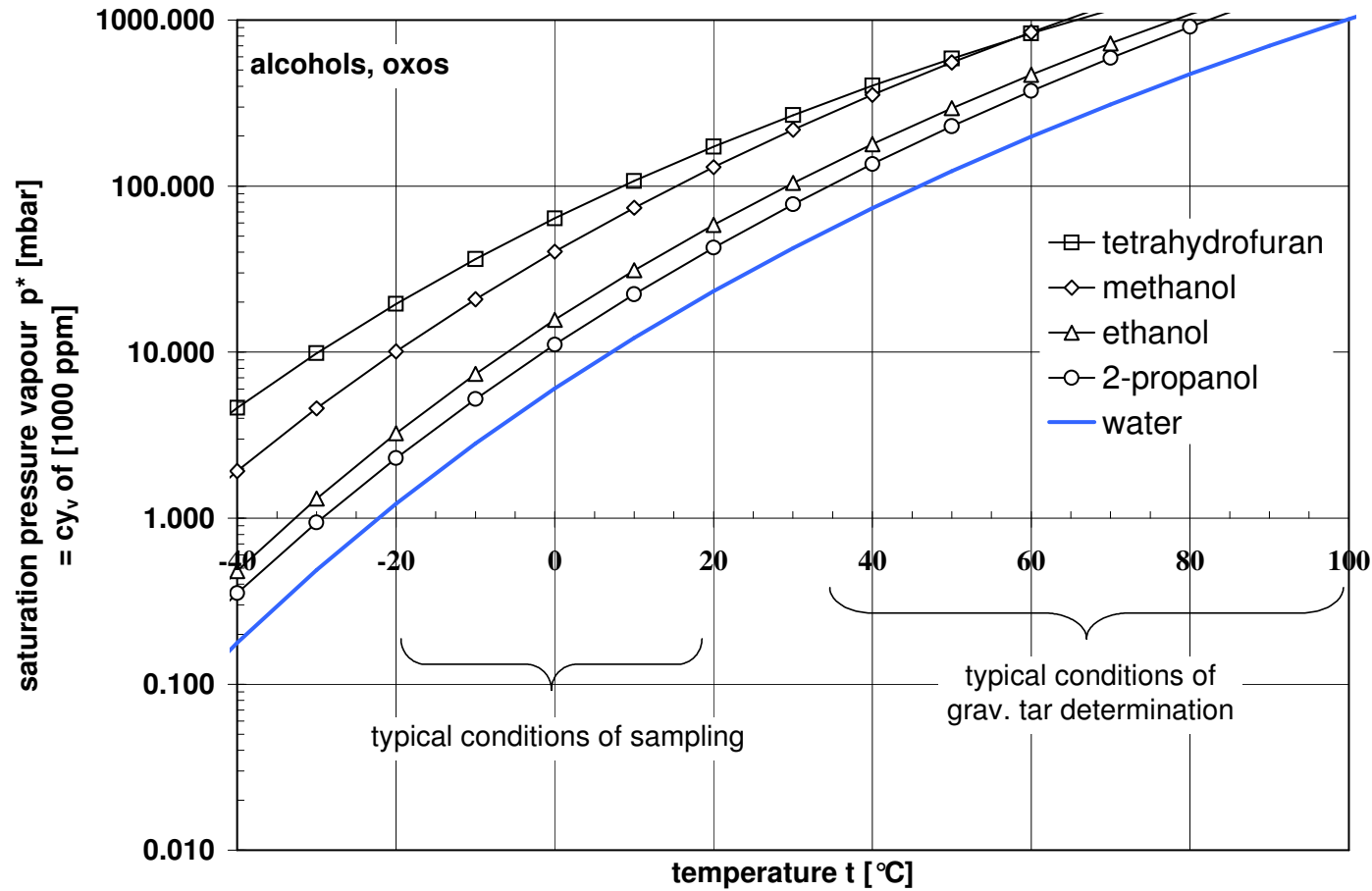


Als Mitglied des Fachverbandes vertreten bei





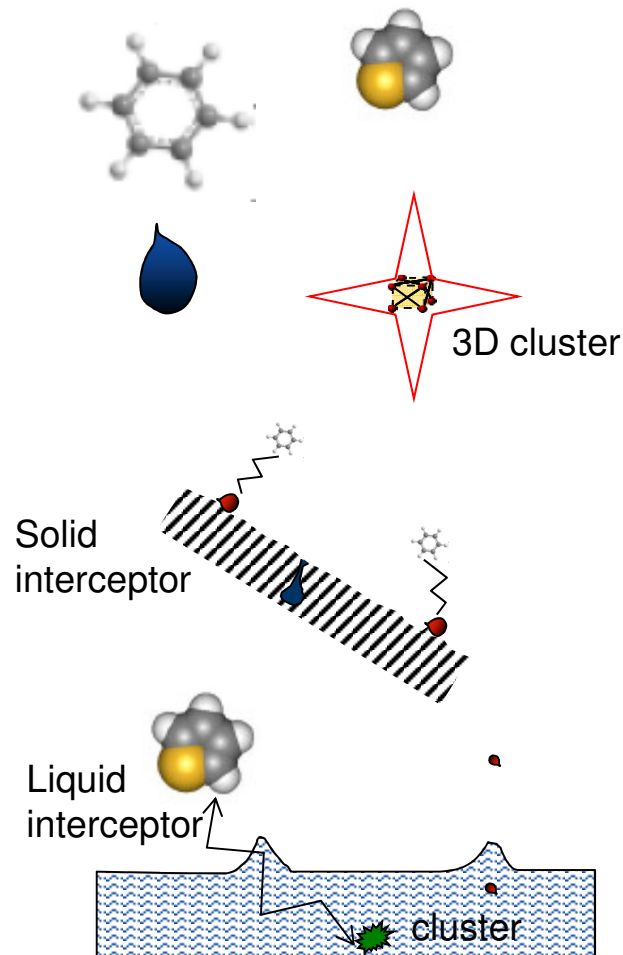
# Physical fundamentals saturation pressures of selected solvents





# Physical fundamentals

## VLE of a selected tar against a solvent



VLE, VSE for a solution of compounds in solvents

Gas phase status, over-critical; sub-critical

Formation of **droplets: Liquid** (condensation):  
10<sup>x</sup> molecules

Formation of **crystals: Solids** (re-sublimation):  
in solid lattice

**Adsorption:** Energetically forced fixation  
of clusters on surface, also pore / cavity condensation  
div. mechanisms, degrees

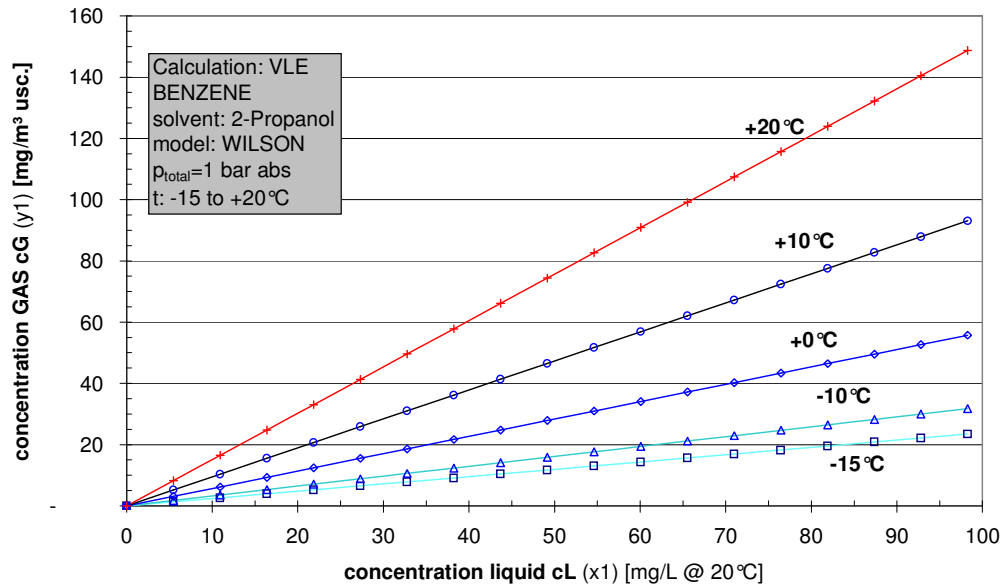
Condensation: stable liquid phase

**Absorption:** VLE-Interaction into homogenous  
liquid phase (solvent,..)



# Physical fundamentals VLE calculation and data support

VLE equilibriumdata for BENZENE in 2-Propanol

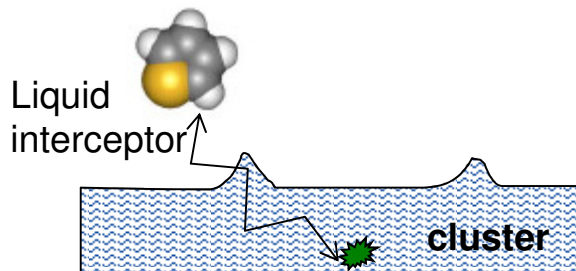


*In term of pressure:*

A partial pressure below saturation can be reached, because of homogeneous dissolution in liquid phase:

**Law of Raoult.**

e.g. when  $x_i \ll \ll \ll!$



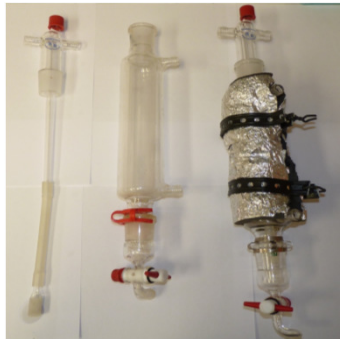
$$p_i = p_{total} \cdot y_i \cdot \varphi_i \Big|_{gas} = p_i^* \cdot x_i \cdot \gamma_{i,in solvent} \Big|_{liquid}$$

**Absorption:** VLE-Interaction into homogenous liquid phase (solvent,..)

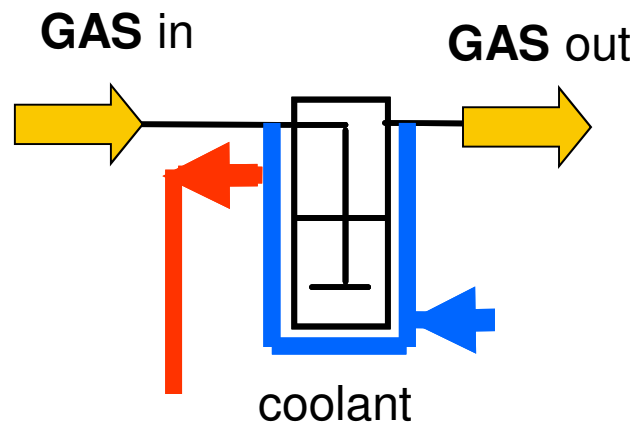


# Test of a single stage accumulator technical outline

Reality



Balance-system



The **accumulation** is **instat. transient process**  
Normally are impingers as **batch** operated.

The capture depends:

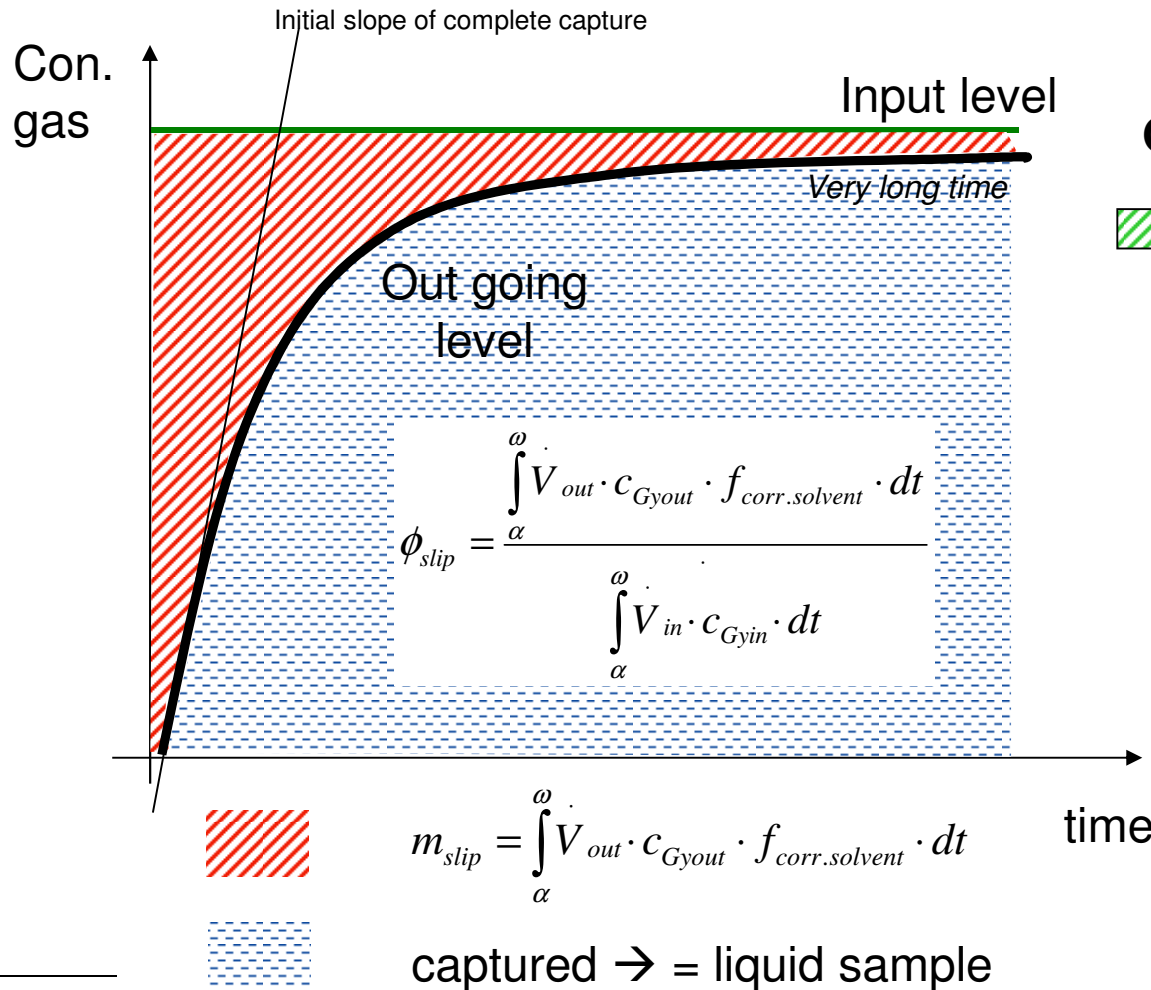
- Ratio flow, capacity
- VLE
- Mass-transfer (condensation, interception,
- absorption, swarm of bubbles, contact time

For application important:

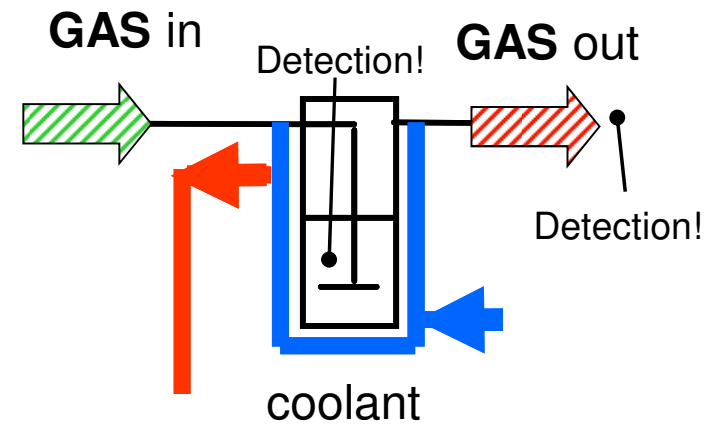
- Conditions of solvent
- Selectivity
- Multicomponents operation
- Capture in transient operation
- Suitable temperatures (VLE)
- Real aerosol capture



# Test of a single stage accumulator: technical outline



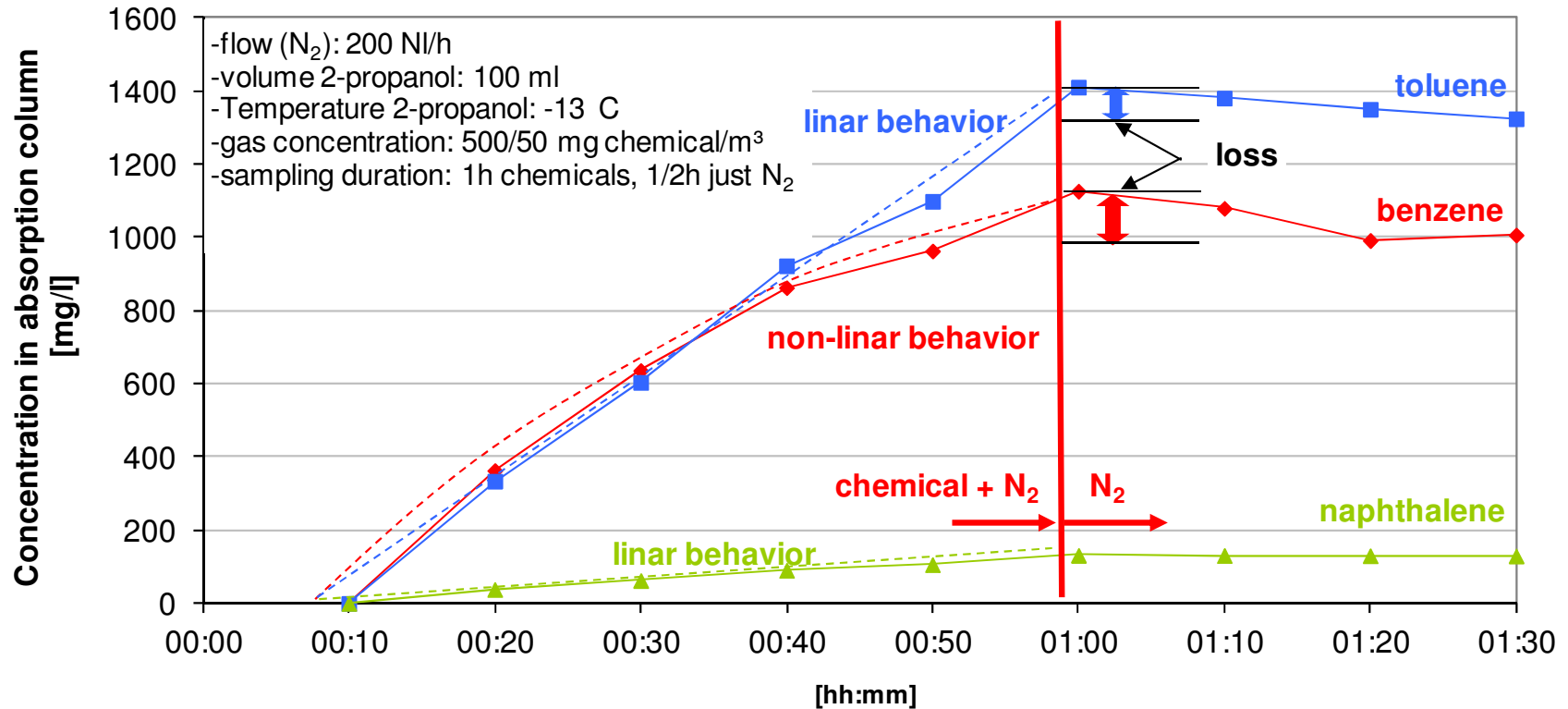
Conditions of example:



- Constant flow of carrier gas
- Const. temperature
- Unchanged mechanisms
- Others (water, solvent)..



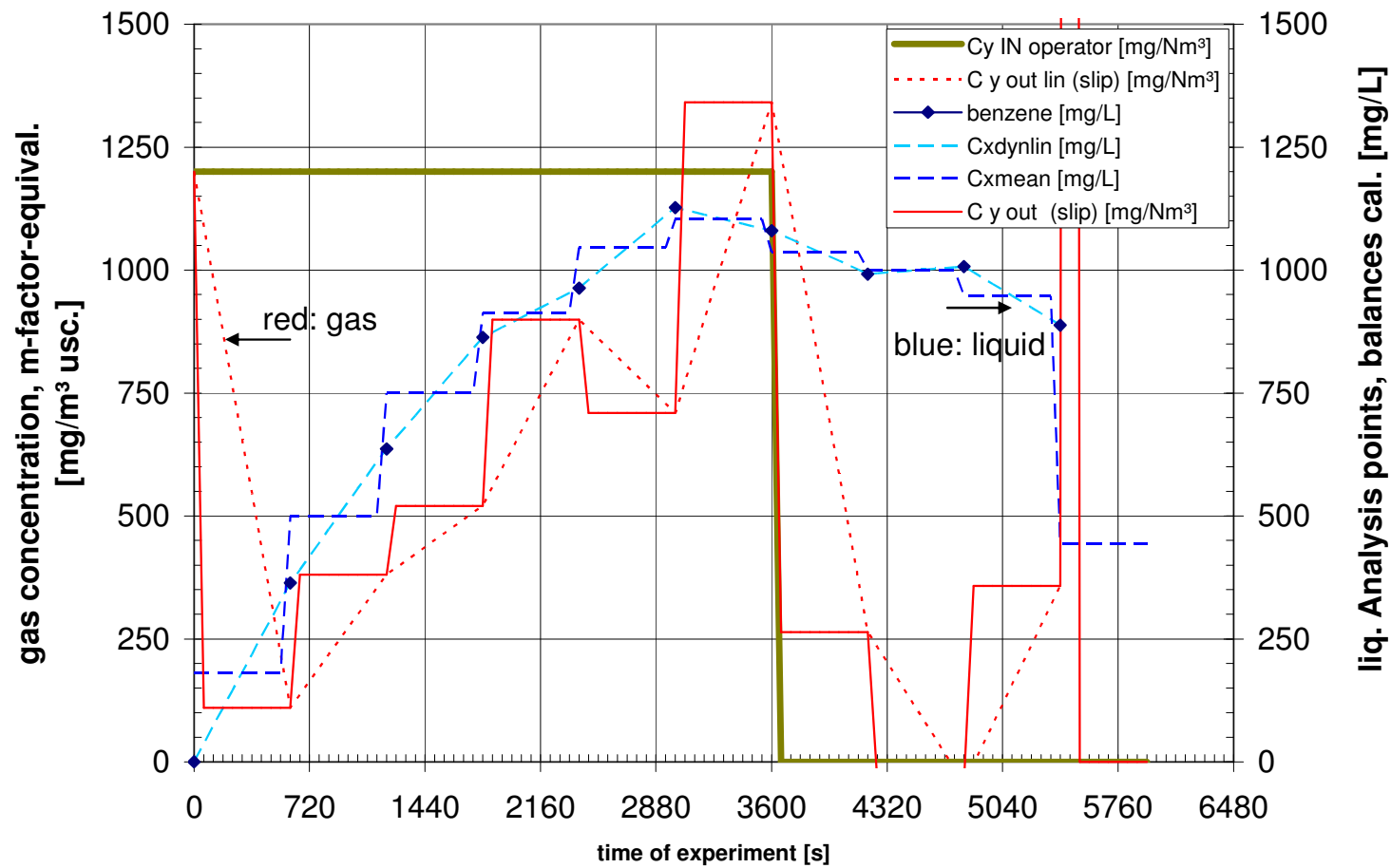
# Test of a single stage accumulator results; 3 compounds



First period substance is within the carrier gas; then only carrier.

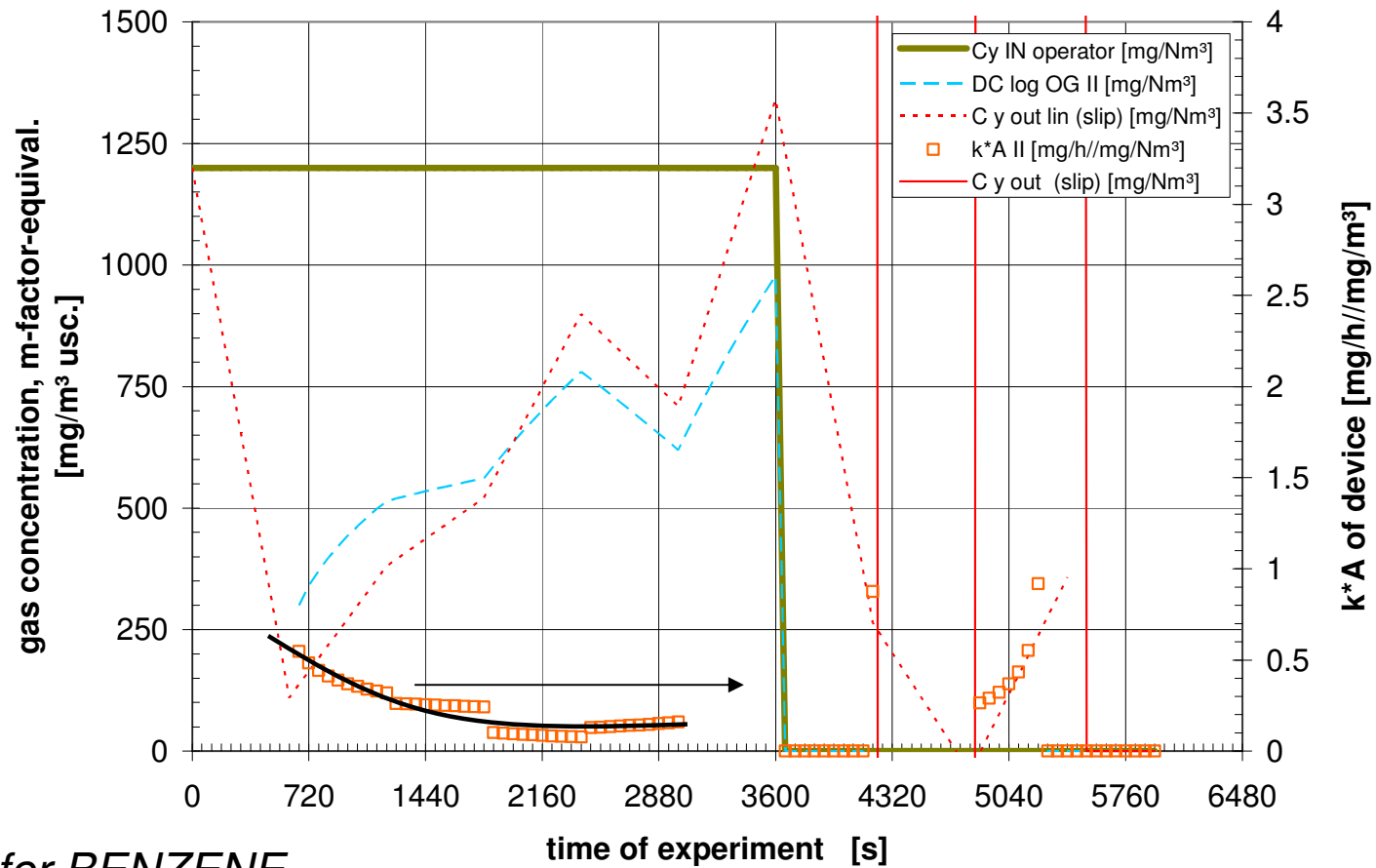


# Test of a single stage accumulator results: dynamic concentrations *BENZENE*





# Test of a single stage accumulator results: *mass transfer-intensity: [k\*A]*



*specific for BENZENE*